

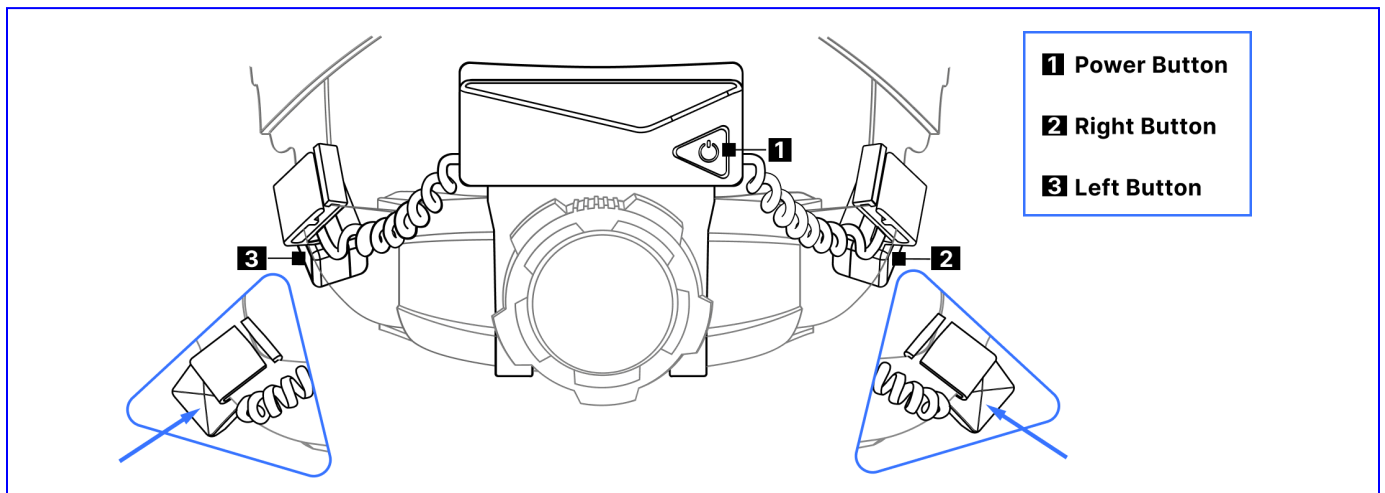


mobiWAN & ES Chat

Quickstart Guide

Updated: December 2023

mobiWAN Control Interface



Initial step

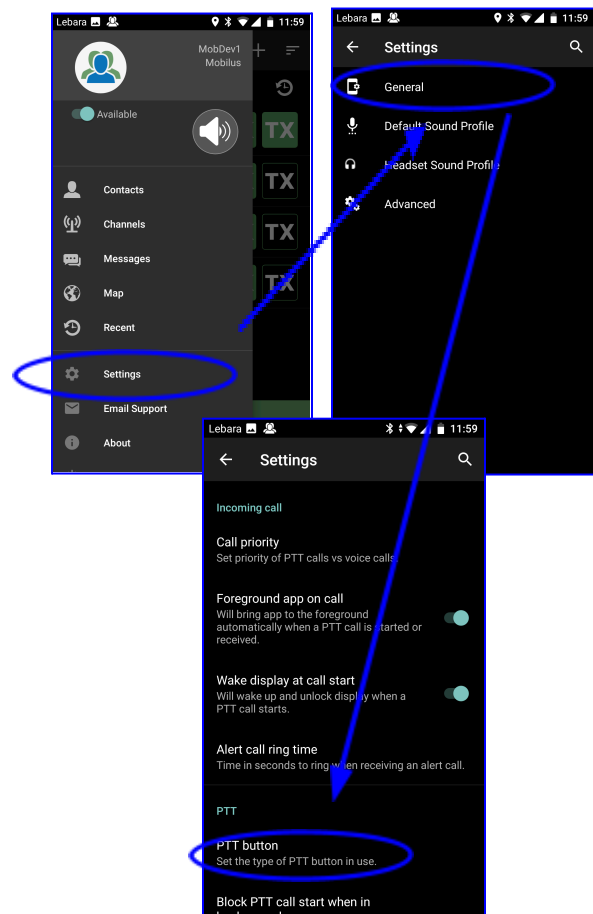
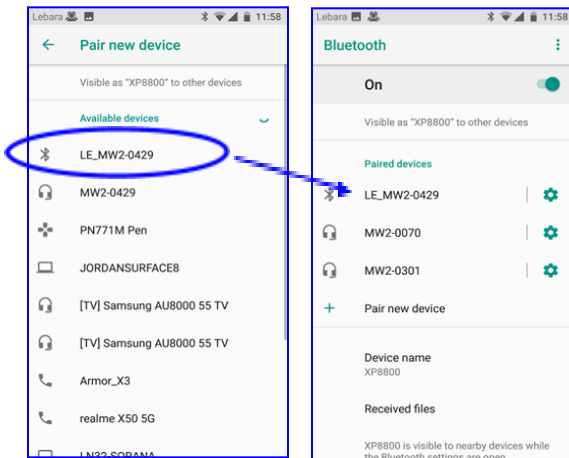
Please make sure that your mobiWAN is in Radio mode. You can easily do this by long pressing the left button **3** on your mobiWAN.


Pairing process with mobiWAN

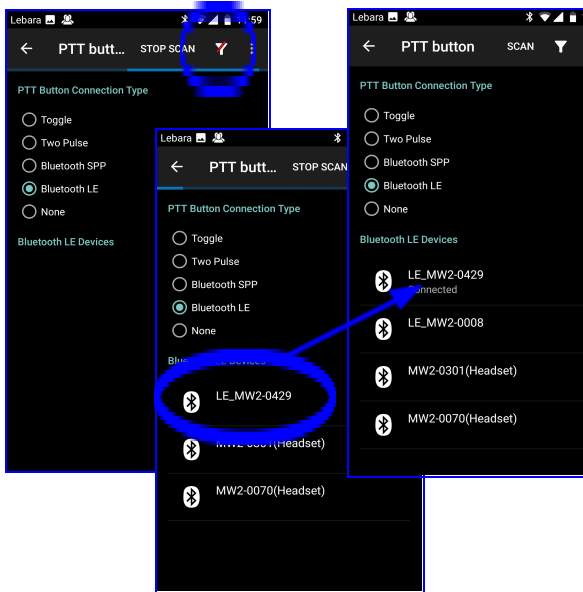
The user needs to connect to the BLE (bluetooth low energy) in order to use the PTT functionality with ES Chat, and Bluetooth Classic is used for audio purposes.

1. Enter pairing mode on the mobiWAN and pair the mobiWAN BLE interface **(LE_MW2-XXXX)** to the smartphone device. After connecting successfully, mobiWAN BLE appears in the paired devices list.
2. From ESChat navigate to **Settings → General → PTT Button**

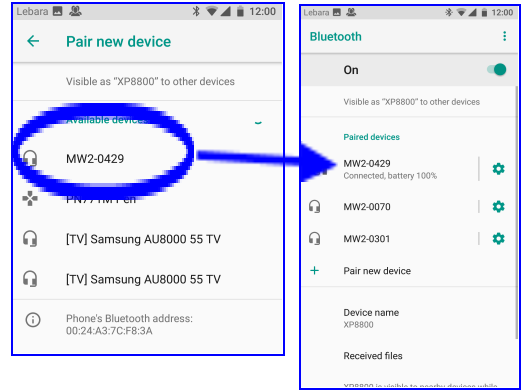
NOTE: *Make sure to select the "LE_" device (BLE) for this step and not the Audio Classic device with a similar name.*



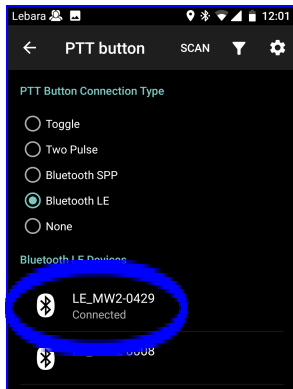
- Unselect the filter option at the top . From the list select the same mobiWAN BLE connection as in Step 1 (LE_MW2_XXXX).




- Pair and connect the Bluetooth Classic Audio connection (MW2_XXXX) to the phone. After connecting successfully, it will appear as the images below:



- Go back to **ESChat App** → **Settings** → **General** → **PTT Button** and confirm BLE is still connected



- Use the mobiWAN **Left PTT Button**  in Toggle to Talk (TTT) mode by **single pressing the button once** to activate the transmission on the TX channel and press again to stop transmission.

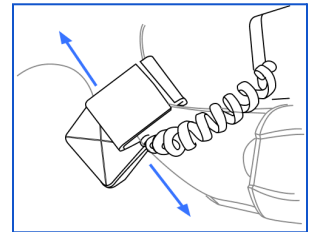


7. Use the mobiWAN **Left PTT Button** **3** in Hold to Talk (HTT) mode by **holding down the button** to activate the transmission on the TX channel and release the button to stop transmission.



Tips for Best Performance

1. **Adjust the mobiWAN in the helmet harness so that it's comfortable.**
Move the mobiWAN module up and down the harness to [get the best fit](#). Changing the track of the helmet harness itself can improve comfort greatly for larger sized heads.
2. **Make sure your device is in Radio Mode.**
Long press on the [Left Button BEFORE Bluetooth connection](#) to a mobile device.
3. **Make sure your device has “Noisy Mode” set to ON.**
Long press the [Left and Right Buttons simultaneously](#) to toggle the Noisy Mode. For simplicity and best audio quality “set and forget” Noisy Mode ON in all applications.
4. **Project your voice, especially in noisy environments.**
The louder and clearer you speak the better the overall quality.
5. **Wear hearing protection.**



mobiWAN works best when you're wearing single (ear plugs) or double (ear plugs + ear muffs) hearing protection in noisy environments.

6. **Set the Volume to level 2 or 3.**

[Volume levels](#) 4 or 5 will be louder but will introduce some audio distortion. Press and hold the **right side button** to reset the volume to the lowest level. Each press then raises the volume by one step. Three beeps signals maximum volume (level 5).

7. **Switch to PTT ON/OFF when in very high noise environments.**

[Treat MS Teams like a PTT Radio by toggling the PTT button](#) (Left Button) ON and OFF to avoid missing incoming audio when in high noise environments.

8. **Remember, your voice may sound different, but clear and intelligible.**

Due to bone conduction, this difference should be comparable to the difference you see in your own voice versus when you listen to an audio recording of yourself.

9. Visit the [Mobilus Labs YouTube](#) page for more detailed video guides for set up of different use cases.

